

**CSE Briefing to
Members of the
Licensing & CSE Working Group**

Kara Haskayne Service Manager Safeguarding
November 2016

Introduction

- What is Child Sexual Exploitation (CSE)
- National lessons learned to date
- Signs that a child may be exploited
- How we advise agencies to refer their concerns re: CSE
- Multi agency actions we undertake to safeguard the child and disrupt and prosecute offenders
- Specific actions re: CSE & licensing
- Feedback received from Ofsted Inspection

Definition of Child Sexual Exploitation

‘Sexual exploitation of children and young people under 18 involves exploitative situations, contexts and relationships where young people (a third person or persons) receive ‘something’ (e.g. food, accommodation, drugs or alcohol, cigarettes, affections, gifts, money) as a result of them performing, and/or another or others performing on them, sexual activities. Child sexual exploitation can occur through the use of technology without the child’s immediate recognition; for example being persuaded to post sexual images on the Internet/mobile phones without immediate payment/gain. In all cases, those exploiting the child/young person have power over them by virtue of their age, gender, intellect, physical strength and/or economic or other resources. Violence, coercion and intimidation are common, involvement in exploitative relationships are characterised in the main by the child or young person’s limited availability of choice resulting from their social / economic and /or emotional vulnerability.’

Safeguarding Children from Sexual Exploitation (DFE 2009:9)

Lessons Learned to date...

- Tackling Sexual Exploitation HM Gov (2015)
- Research in Practice (RIP)
- Oxfordshire Serious Case Review (2015)
- Louise Casey Inspection into Rotherham management of CSE (2015)
- Alexis Jay Report re: Rotherham (2014)
- 'The sexual exploitation of children: it couldn't happen here, could it?' (Nov 2014) Ofsted
- 'It's wrong but you get used to it' (Nov 2013) Children's Commissioner and Bedford University
- 'If only someone had listened' Office of Children's Commissioner Inquiry into Child Sexual Exploitation in Gangs and Groups (Nov 2013)
- Safeguarding Children and Young People from Sexual Exploitation DFE (2009) Statutory Guidance

Signs of possible Sexual Child Exploitation

- Physical signs – bruising re: physical / sexual assault
- Chronic Fatigue
- Recurring or multiple sexual transmitted infections
- Pregnancy / seeking abortion or ECH
- Sexually risky behaviour
- Truancy / disengagement from education
- Array of mood swings / use of abusive language
- Getting involved in crime – shoplifting and stealing to carrying drugs and guns for organised crime groups ‘gangs’
- Secretive behaviour
- Entering or leaving vehicles driven by unknown adults
- Low self image, low self esteem, self harming (cutting, overdosing, eating disorder, promiscuity)
- Presenting at health appointments with a older male(s) or older female who is not a family member
- Having a telephone in their presence during health appointments on the desk ‘recording the discussion’

Signs of possible Sexual Child Exploitation (cont)

- Hostility parent / carers relationships & placement breakdowns
- Associating with young people involved in CSE
- Sexual relationship with older adult & unexplained relationships
- Inappropriate use of internet for forming relationships with adults (CEOP lessons learned)
- Phone calls, texts, messages, letter from unknown adults
- Persistently missing, staying out overnight, returning late without explanation OR, doing our for an hour very often after receiving a phone call / message
- Returning home after being missing looking well and cared for in spite of not having a known home base
- Missing for long periods
- Change in appearance – new clothes, expensive perfume, make up, shoes
- Large amounts of money, mobile phones, i pads etc with no explanation
- Having keys to premises not known about
- Other young people being taken with them and going missing ‘recruitment of others’

How we advise agencies to refer their CSE concerns

http://www.sefton.gov.uk/1924

Contact | Accessibility help | Languages | Sitemap

Sefton Council

Home | Residents | Business | Around Sefton | I want to

Social Care > Report a child at risk > Information for professionals

Information for professionals

This section:
Report a child at risk
Information for professionals

If you are unsure whether to make a referral, please have a discussion with the designated child protection officer within your organisation.

For all general enquiries please continue to call 0345 140 0845 between 8am and 6pm.

If you would like to have a consultation with a social worker prior to making a referral through to Children's Social Care call the MASH Team on 0151 934 4388.

Please refer to the **Child Referral Form**, on the right, for an example of the questions you will be asked to answer, if however after referring to the document you require further assistance you can speak to a MASH Contact Officer on the following numbers 0151 934 3801/2533/4200/3596.

For urgent advice/response outside of office hours (from 5.30pm Mon to Thurs, 4pm Friday and weekends) contact the emergency duty team on 0151 920 8234. If you think a child is in immediate danger then call for police assistance.

For more information about the safety of children and young people see the Sefton Safeguarding Children Board website.

Child Sexual Exploitation

For referrals specifically in relation to concerns about Child Sexual Exploitation, please also complete the following 2 forms and securely email them to SocialCareCustomerAccessTeam@sefton.gcsx.gov.uk

CSE referral form	(word 23KB)
Referral risk assessment form	(word 26KB)

Do it online

[Child referral form for professional use \(eform\)](#) [ext](#)

Related links

[Local Safeguarding Children's Board](#) [ext](#)

[Training Strategy \(Joint Children's & Adults' Safeguarding Boards\)](#) [ext](#)

Rate this page

2 people liked this page

13:26 02/02/2016

Local Safeguarding Children Board CSE Website

Content - Umbraco CMS - x Child Sexual Exploitation x

www.seftonlscb.co.uk/child-sexual-exploitation.aspx

SEFTON Local Safeguarding Children Board

Preview Mode - click to end

Home Professionals Parents and Carers Children and Young People Policy & Guidance

E-Safety CSE Pathway CSE Documents CSE On-Line

Search Search

Professionals

Parents and Carers

Children and Young People

Child Sexual Exploitation

Worried about a Child

Prevent Duty Guidance

Safe Sleep

Private Fostering

Child Sexual Exploitation (CSE)

How to spot the signs

What is Child Sexual Exploitation?

Child Sexual Exploitation (CSE) is a type of child sexual abuse. It is the deliberate exploitation of a child or young person purely for the sexual gratification of adults. Any child or young person could become a victim of child sexual exploitation; this abuse and crime affects both girls and boys, from any background and of any ethnicity.

Even something that seems like normal teenage behaviour could be a sign that a child or young person is being sexually exploited. Some of the visible signs include:

- Physical injuries** – being harmed physically, unexplained wounds and visible signs of injury
- Involvement in offending** – sudden involvement in criminal behaviour or increased offending
- Thoughts of or attempts at suicide** – feeling so overwhelmed by negative feelings, stressful or upsetting situations, that they feel there is no other option
- Receipt of gifts from unknown sources** – unexplained gifts or new possessions such as clothes, jewellery, mobile phones or money that can't be accounted for. This is part of the grooming process which makes the young person feel wanted and is used to get control over them
- Withdrawn from family** – change in behaviour – becoming aggressive and disruptive or quiet and withdrawn
- Absence from school** – regularly missing from school without reason
- Poor mental health** – is associated with social exclusion, unhealthy lifestyle, risks of violence, physical ill-health and human rights violations affecting the way a young person thinks, feels and behaves

About Us

Latest News

Training

Managing Allegations - LADO

Threshold Document

Multi-Agency Safeguarding Procedures

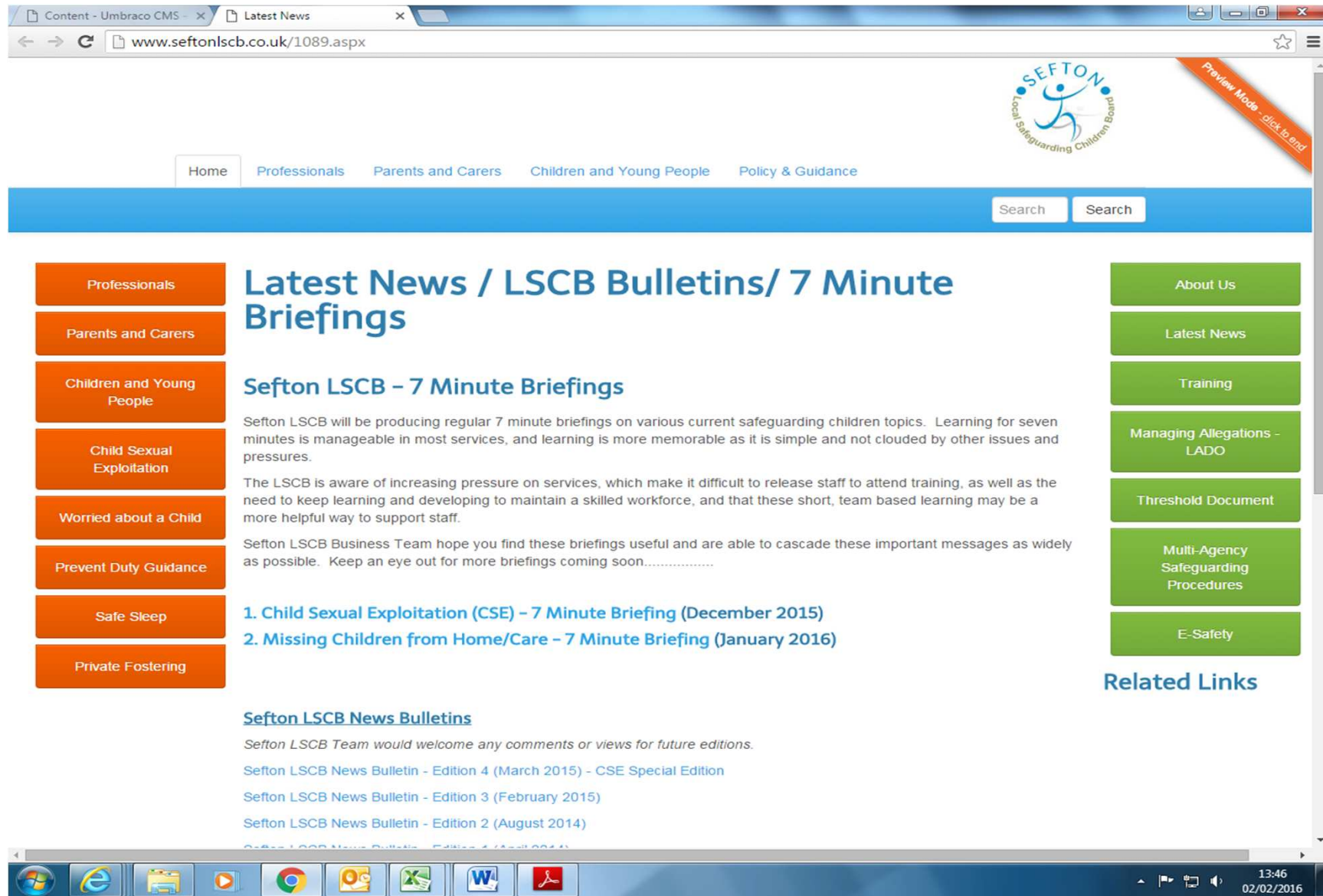
E-Safety

Related Links

- www.listentomystory.co.uk

13:47 02/02/2016

Local Safeguarding Children Board CSE Website



The screenshot shows a web browser window displaying the Sefton Local Safeguarding Children Board (LSCB) website. The browser's address bar shows the URL www.seftonlscb.co.uk/1089.aspx. The website features a blue header with a navigation menu including Home, Professionals, Parents and Carers, Children and Young People, and Policy & Guidance. A search bar is also present. The main content area is titled "Latest News / LSCB Bulletins/ 7 Minute Briefings" and includes a sub-section for "Sefton LSCB - 7 Minute Briefings". This section contains introductory text and a list of two briefings: "1. Child Sexual Exploitation (CSE) - 7 Minute Briefing (December 2015)" and "2. Missing Children from Home/Care - 7 Minute Briefing (January 2016)". A sidebar on the left lists various topics, and a sidebar on the right provides links to "About Us", "Latest News", "Training", "Managing Allegations - LADO", "Threshold Document", "Multi-Agency Safeguarding Procedures", and "E-Safety". The Windows taskbar at the bottom shows the system time as 13:46 on 02/02/2016.

Content - Umbraco CMS - x Latest News x
www.seftonlscb.co.uk/1089.aspx

SEFTON Local Safeguarding Children Board

Preview Mode - click to end

Home Professionals Parents and Carers Children and Young People Policy & Guidance

Search Search

Professionals
Parents and Carers
Children and Young People
Child Sexual Exploitation
Worried about a Child
Prevent Duty Guidance
Safe Sleep
Private Fostering

Latest News / LSCB Bulletins/ 7 Minute Briefings

Sefton LSCB - 7 Minute Briefings

Sefton LSCB will be producing regular 7 minute briefings on various current safeguarding children topics. Learning for seven minutes is manageable in most services, and learning is more memorable as it is simple and not clouded by other issues and pressures.

The LSCB is aware of increasing pressure on services, which make it difficult to release staff to attend training, as well as the need to keep learning and developing to maintain a skilled workforce, and that these short, team based learning may be a more helpful way to support staff.

Sefton LSCB Business Team hope you find these briefings useful and are able to cascade these important messages as widely as possible. Keep an eye out for more briefings coming soon.....

1. [Child Sexual Exploitation \(CSE\) - 7 Minute Briefing \(December 2015\)](#)
2. [Missing Children from Home/Care - 7 Minute Briefing \(January 2016\)](#)

Sefton LSCB News Bulletins

Sefton LSCB Team would welcome any comments or views for future editions.

[Sefton LSCB News Bulletin - Edition 4 \(March 2015\) - CSE Special Edition](#)

[Sefton LSCB News Bulletin - Edition 3 \(February 2015\)](#)

[Sefton LSCB News Bulletin - Edition 2 \(August 2014\)](#)

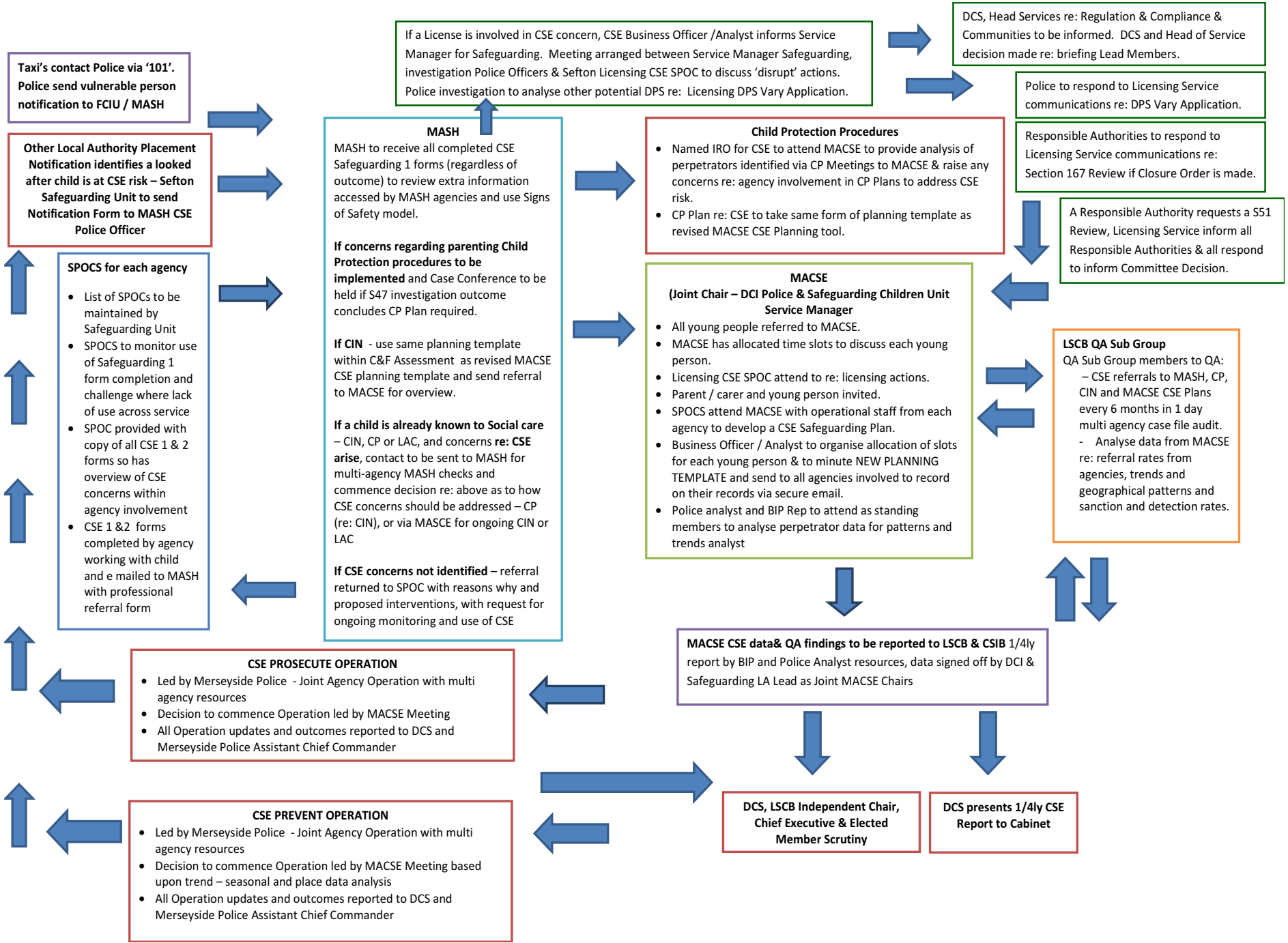
[Sefton LSCB News Bulletin - Edition 1 \(April 2014\)](#)

About Us
Latest News
Training
Managing Allegations - LADO
Threshold Document
Multi-Agency Safeguarding Procedures
E-Safety

Related Links

13:46
02/02/2016

**Local Safeguarding Children Board
Partnership CSE Pathway**



Taxi's contact Police via '101'. Police send vulnerable person notification to FCIU / MASH

Other Local Authority Placement Notification identifies a looked after child is at CSE risk – Sefton Safeguarding Unit to send Notification Form to MASH CSE Police Officer

SPOCS for each agency

- List of SPOCs to be maintained by Safeguarding Unit
- SPOCS to monitor use of Safeguarding 1 form completion and challenge where lack of use across service
- SPOC provided with copy of all CSE 1 & 2 forms so has overview of CSE concerns within agency involvement
- CSE 1 & 2 forms completed by agency working with child and e mailed to MASH with professional referral form

If a License is involved in CSE concern, CSE Business Officer /Analyst informs Service Manager for Safeguarding. Meeting arranged between Service Manager Safeguarding, investigation Police Officers & Sefton Licensing CSE SPOC to discuss 'disrupt' actions. Police investigation to analyse other potential DPS re: Licensing DPS Vary Application.

DCS, Head Services re: Regulation & Compliance & Communities to be informed. DCS and Head of Service decision made re: briefing Lead Members.

Police to respond to Licensing Service communications re: DPS Vary Application.

Responsible Authorities to respond to Licensing Service communications re: Section 167 Review if Closure Order is made.

A Responsible Authority requests a S51 Review, Licensing Service inform all Responsible Authorities & all respond to inform Committee Decision.

MASH

MASH to receive all completed CSE Safeguarding 1 forms (regardless of outcome) to review extra information accessed by MASH agencies and use Signs of Safety model.

If concerns regarding parenting Child Protection procedures to be implemented and Case Conference to be held if S47 investigation outcome concludes CP Plan required.

If CIN - use same planning template within C&F Assessment as revised MACSE CSE planning template and send referral to MACSE for overview.

If a child is already known to Social care – CIN, CP or LAC, and concerns re: **CSE arise**, contact to be sent to MASH for multi-agency MASH checks and commence decision re: above as to how CSE concerns should be addressed – CP (re: CIN), or via MASCE for ongoing CIN or LAC

If CSE concerns not identified – referral returned to SPOC with reasons why and proposed interventions, with request for ongoing monitoring and use of CSE

Child Protection Procedures

- Named IRO for CSE to attend MACSE to provide analysis of perpetrators identified via CP Meetings to MACSE & raise any concerns re: agency involvement in CP Plans to address CSE risk.
- CP Plan re: CSE to take same form of planning template as revised MACSE CSE Planning tool.

MACSE (Joint Chair – DCI Police & Safeguarding Children Unit Service Manager)

- All young people referred to MACSE.
- MACSE has allocated time slots to discuss each young person.
- Licensing CSE SPOC attend to re: licensing actions.
- Parent / carer and young person invited.
- SPOCS attend MACSE with operational staff from each agency to develop a CSE Safeguarding Plan.
- Business Officer / Analyst to organise allocation of slots for each young person & to minute NEW PLANNING TEMPLATE and send to all agencies involved to record on their records via secure email.
- Police analyst and BIP Rep to attend as standing members to analyse perpetrator data for patterns and trends analyst

LSCB QA Sub Group

QA Sub Group members to QA:

- CSE referrals to MASH, CP, CIN and MACSE CSE Plans every 6 months in 1 day multi agency case file audit.
- Analyse data from MACSE re: referral rates from agencies, trends and geographical patterns and sanction and detection rates.

MACSE CSE data & QA findings to be reported to LSCB & CSIB 1/4ly report by BIP and Police Analyst resources, data signed off by DCI & Safeguarding LA Lead as Joint MACSE Chairs

DCS, LSCB Independent Chair, Chief Executive & Elected Member Scrutiny

DCS presents 1/4ly CSE Report to Cabinet

CSE PROSECUTE OPERATION

- Led by Merseyside Police - Joint Agency Operation with multi agency resources
- Decision to commence Operation led by MACSE Meeting
- All Operation updates and outcomes reported to DCS and Merseyside Police Assistant Chief Commander

CSE PREVENT OPERATION

- Led by Merseyside Police - Joint Agency Operation with multi agency resources
- Decision to commence Operation led by MACSE Meeting based upon trend – seasonal and place data analysis
- All Operation updates and outcomes reported to DCS and Merseyside Police Assistant Chief Commander

Actions undertaken specific to licensed premises or person

- All license applications are considered by the Police and Safeguarding Children Unit – to identify any safeguarding concerns re: individuals
- If a CSE concern received by MASH involves a licensed premises / individual the concern is communicated to the Council and Police Licensing Services.
- Sefton Taxi Handbook has been updated – all concerns re: taxi drivers lead to partnership panel decision with safeguarding children input to remove license whilst investigation is undertaken.
- Pro-active Police Investigation is undertaken involving analysis of IT equipment.
- Agencies support Police investigation by providing evidence via Multi-Agency CSE Meetings and MACSE Plans.
- A Child Abduction Warning Notice (CAWN) can be issued by the Police if someone is of concern when a child has been reported missing.
- Anti Social Behaviour Civil Legislation Closure Orders can be issued against a premises.
- Letter sent from Sefton Chief Executive and Merseyside Police to Home Office re: requesting changes to Licensing Legislation to safeguard children from CSE.

Ofsted Inspection findings re: CSE

- A highly effective multi-agency strategy which has resulted in innovative practice to safeguard children from CSE
- Good strategic work, underpinned by strong partnership working with other agencies, such as police and health, has resulted in a whole-systems approach to CSE
- Clear, holistic and effective partnership working is evident for children at risk of CSE and those who go missing from home, care or education and access to services through the Multi Agency Safeguarding Hub (MASH).
- MACSE ensures timely partnership information sharing, case planning and risk management at an individual case level when children are identified as at risk
- Arrangements underpin information and intelligence sharing and support proactive partnership work on the ground

Ofsted Inspection findings re: CSE

- Operational responses to address CSE were seen as strong
- Creative direct work engages young people and makes a positive difference to children.
- Actions to safeguard children looked after inappropriately placed in Sefton by other authorities demonstrate outstanding rigour and effectiveness
- Sefton's CSE Strategy is underpinned by an innovative raising awareness communication strategy and preventative work which were referred to as outstanding